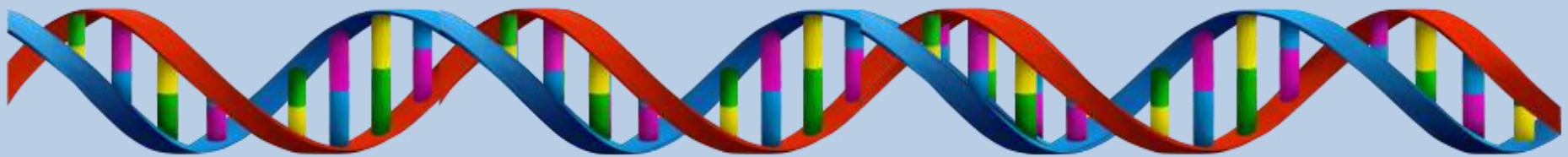


**Take out a pencil and a
correcting pen.**

**PUT ALL OF YOUR BELONGINGS
AWAY!**



Carbon Cycle

- **Label arrows 1, 3, 4, 5 with your new vocabulary terms**
- **Explain the process happening for arrow 2 in your own words**

Carbon Cycle

- If you missed 2 or more questions join Ms. Bynum's small group review of the carbon cycle- bring your carbon cycle lab sheet!
- Everyone else will start on their nitrogen cycle

Nitrogen Cycle

- **Draw arrows on your nitrogen cycle diagram**
- **Label and be able to explain these terms:**
 - **Nitrogen fixation**
 - **Denitrification**
 - **Leaching**

Nitrogen Cycle

If you have extra time:

- Finish your nitrogen lab analysis questions
- What do you notice about question 4?
- Insert the nitrogen chemical formulas (N_2 , NO_3^- , NH_3 , NO_2^-)
- Color code your diagram

Nitrogen Cycle

If you have extra time:

- Finish your nitrogen lab analysis questions
- What do you notice about question 4?
- Insert the nitrogen chemical formulas (N_2 , NO_3^- , NH_3 , NO_2^-)
- Color code your diagram

Lab Introduction

- For the next few days we will be investigating algae



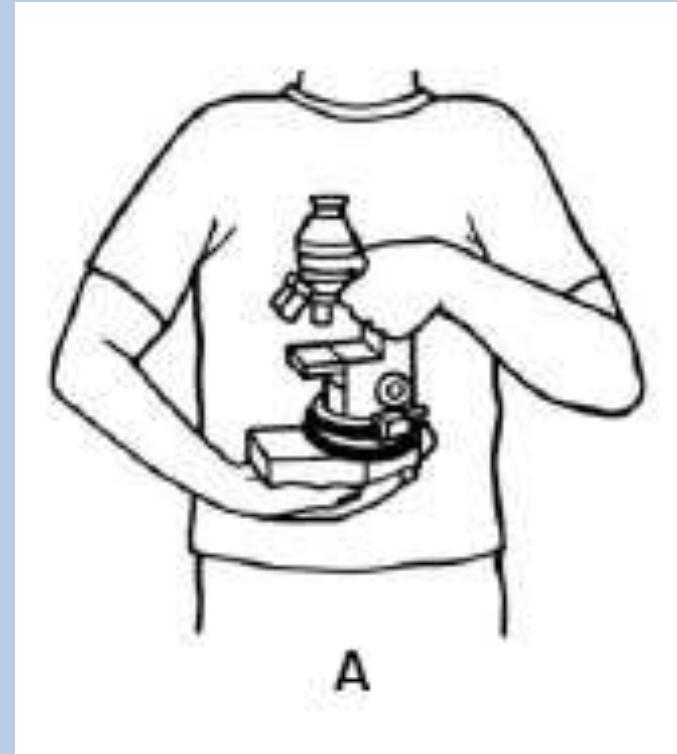
Lab Introduction

- **Are we studying a population or community?**



Microscope Activity

- Today you will be using microscopes
- **BE VERY CAREFUL:**
- Carry with two hands; one on base, one on arm



Microscope Activity

- **DO NOT USE THE COURSE ADJUSTMENT ON HIGH OBJECTIVES**
- **COURSE ADJUSTMENT IS THE BIG KNOB**



Microscope Activity

- **USE THE STAGE CLIPS**



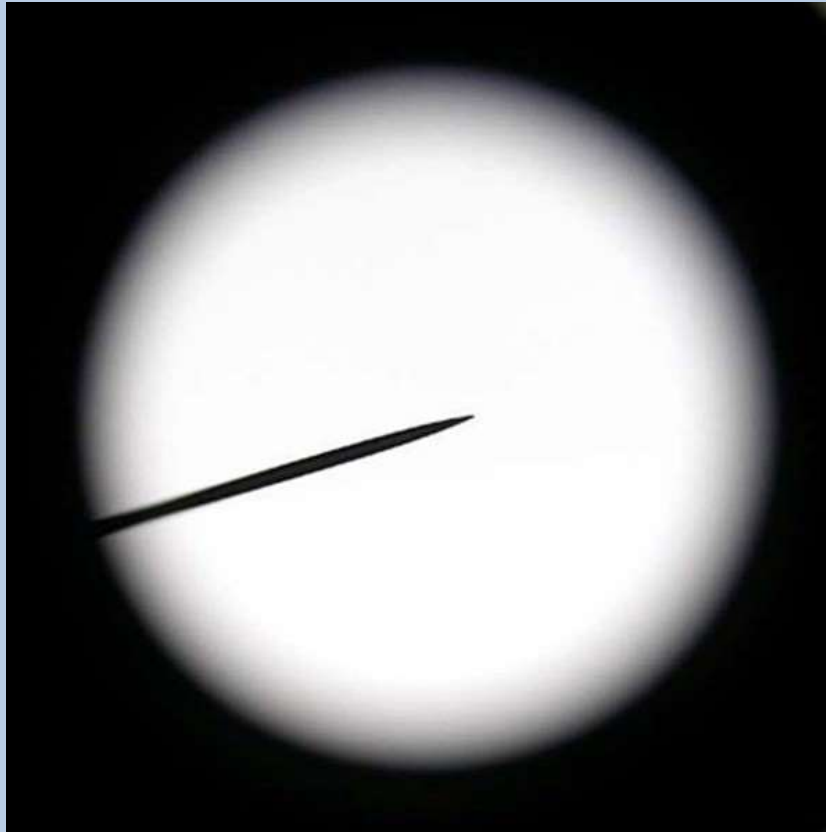
Microscope Activity

- **ADJUST THE LIGHT WITH THE IRIS**



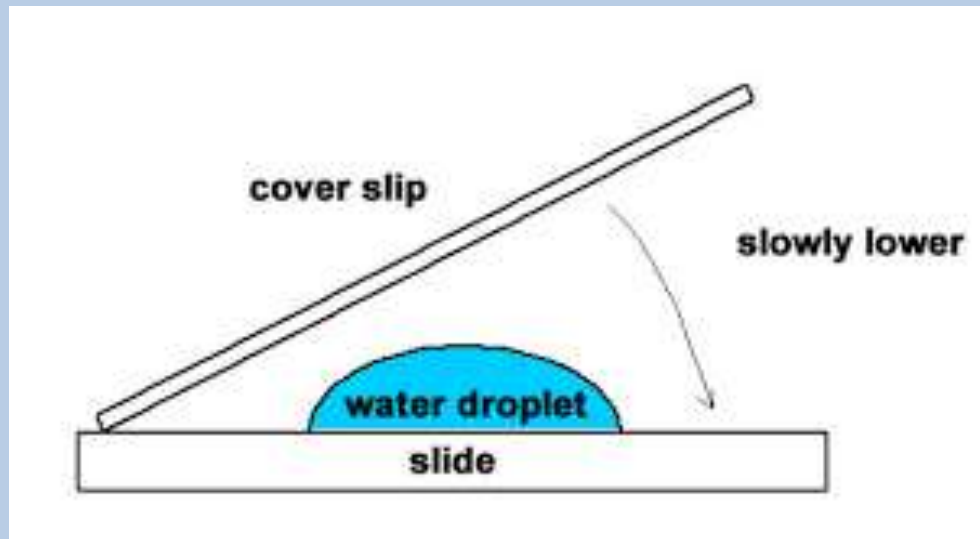
Microscope Activity

- **Whatever the needle is pointing at will be what is zoomed in on**



Microscope Activity

- **Wet mounts**
 - Place item on slide, drop water on slide with your finger, roll cover slip on to insure there are NO air bubbles



Populations

- You **must have your goggles on** your face when you are handling live culture.



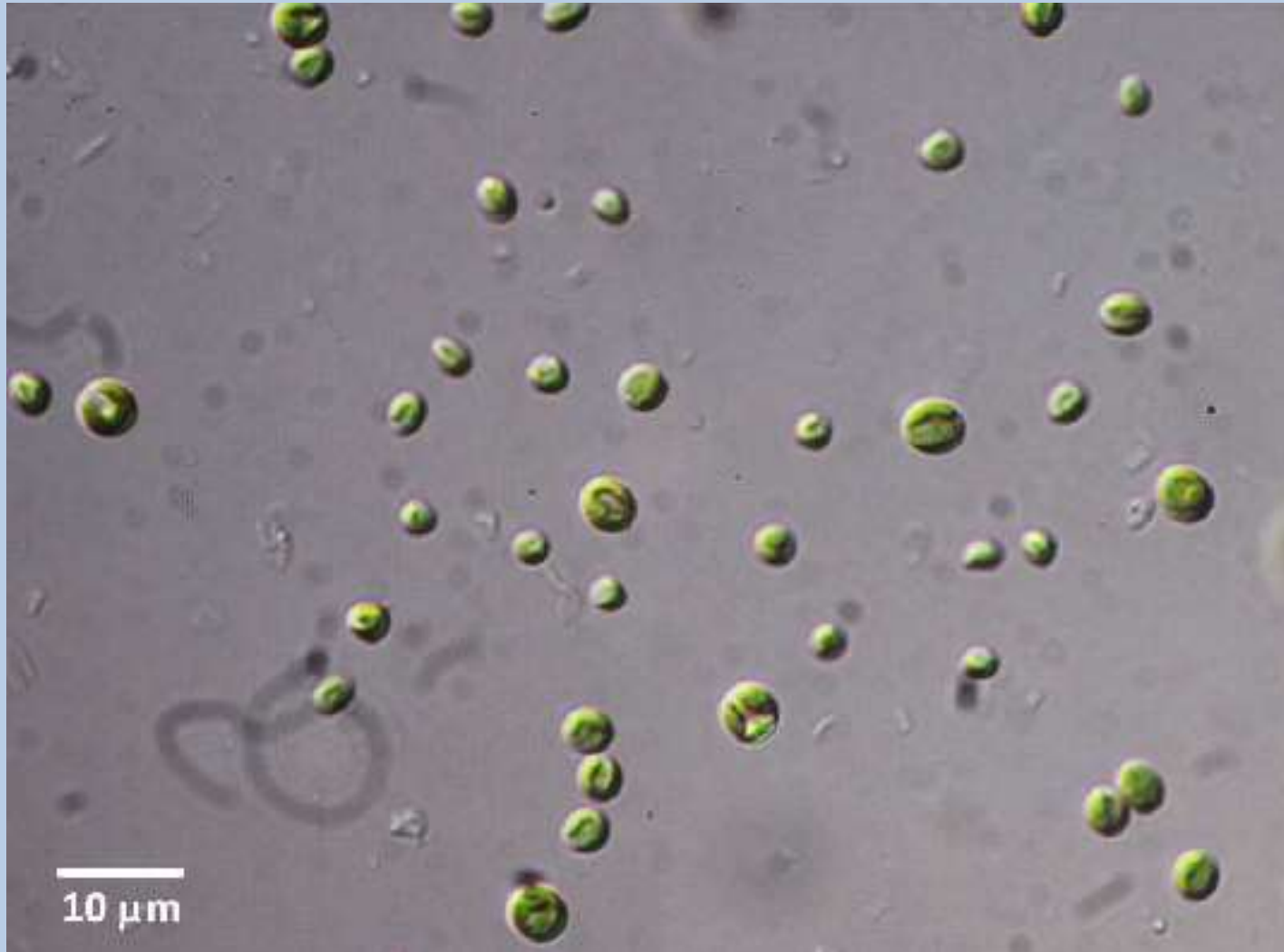
Populations

- **Today you will be setting up your experimental design:**
 - **Pre-Lab**
 - **Part A procedures**
 - **Get Experimental Design Table checked off to get cotton balls**
 - **Complete your control counts**
 - **Go back to your seat**

Populations



Populations



Populations

- **It is your responsibility to count the algae population every day this week and submit your data!**

