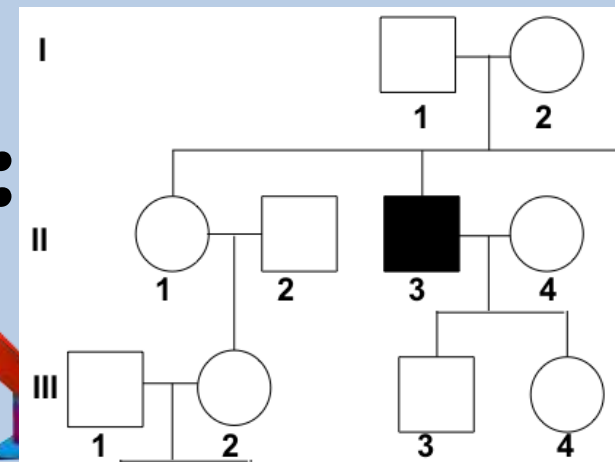
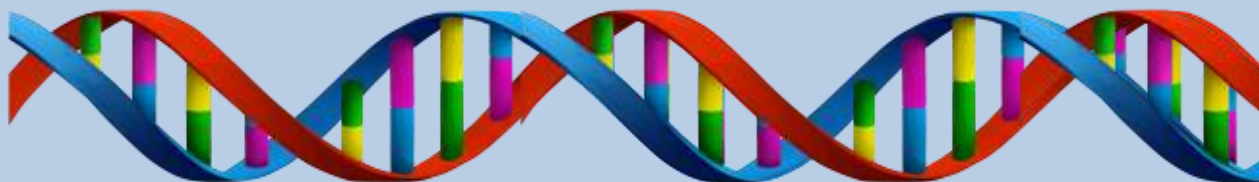
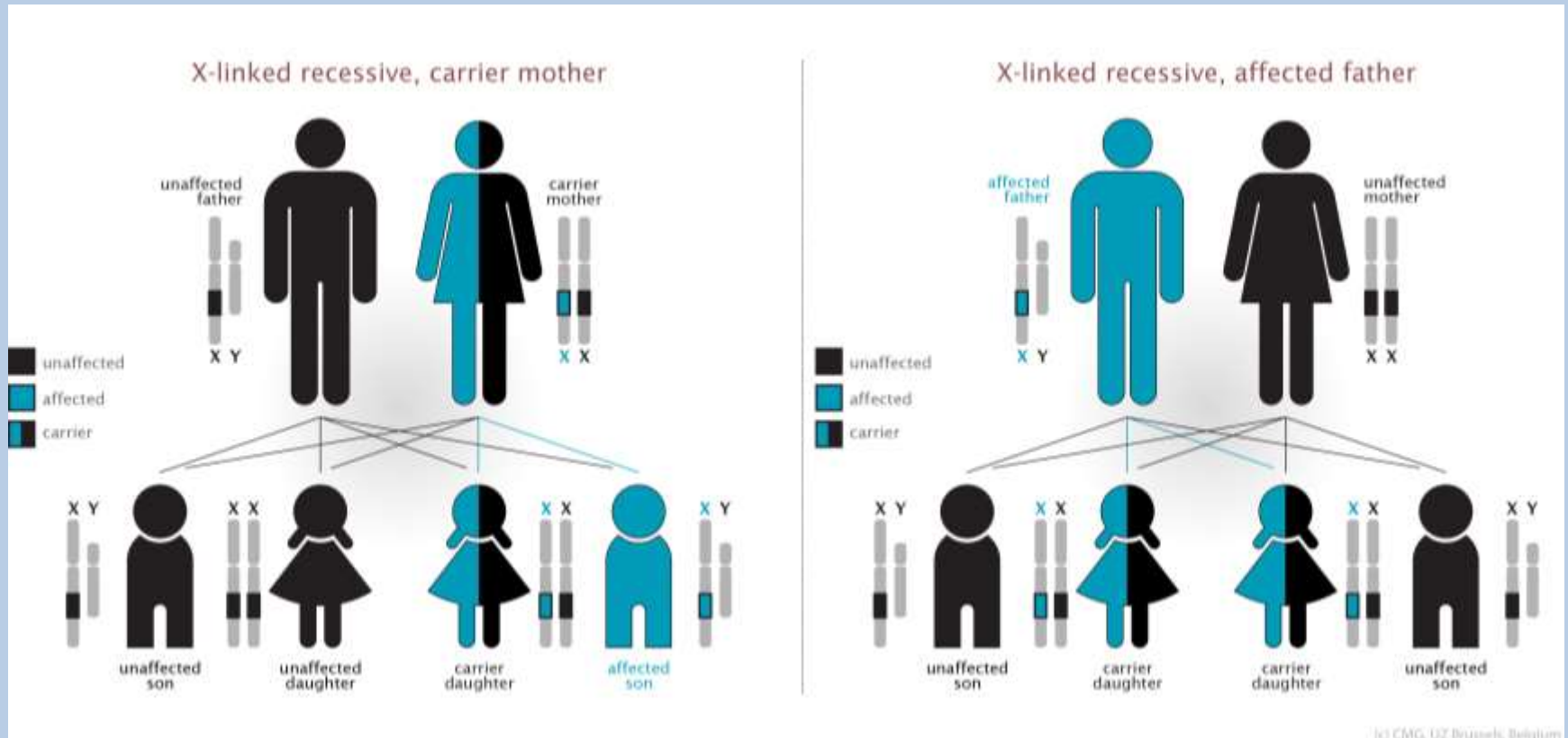


**Duchenne muscular dystrophy is a sex-linked recessive disorder:**

- 1. How many disease alleles does an affected female have?**
- 2. How many disease alleles does an affected male have?**
- 3. Decipher this pedigree:**



# Sex-Linked Recessive



# Complex Inheritance

- **Packets out!**

# Blood Type

Phenotype (Blood type)	Genotype
Type A	$I^A I^A$ or $I^A i$
Type B	$I^B I^B$ or $I^B i$
Type AB	$I^A I^B$
Type O	$i i$

# Blood Type

		Mother	
		$I^A$	$I^B$
Father	$I^B$	$I^A I^B$	$I^B I^B$
	$i$	$I^A i$	$I^B i$

- Type AB can never have a type O child
- O is recessive, and AB does not carry the “i” allele

# Genetic Disorder Project

- In groups of 4... NOT 5... NOT 3...

4

# **Genetic Disorder Project**

- **Each member will be responsible for certain information**
- **Member assignments will be up to the group**

# Genetic Disorder Project

- You will have today and tomorrow to put the presentations together
- Presentations must be no more than 4 minutes
- Presentations will be during  
BLOCK DAYS
- **STAY FOCUSED**



# Genetic Disorder Project

- **Today:**
  1. **Research and select a genetic disorder**
  2. **Sign up on the front desk**  
ONLY ONE GROUP PER GENETIC DISORDER
  3. **Member assignments**
  4. **Research/answer the questions in the section you are assigned to**