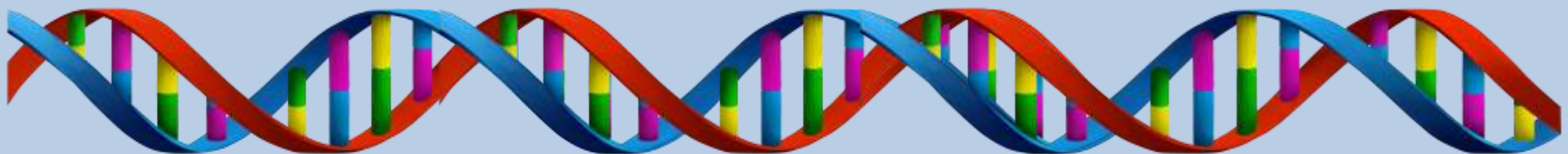


- 1. What is Ecology?**
- 2. Observe the picture on your table. List the biotic and abiotic factors.**
- 3. What is an example of an interaction between a biotic and abiotic factor?**



# Logistics

- Re-take policy on page 3 in your notebook
- Wrap-Up Due today 9pm!

<u>Class Period</u>	<u>Class ID</u>	<u>Enrollment Key</u>
<b>1<sup>st</sup> Period</b>	<b>22558995</b>	<b>moberly1</b>
<b>2<sup>nd</sup> Period</b>	<b>22558998</b>	<b>moberly2</b>
<b>3<sup>rd</sup> Period</b>	<b>22559000</b>	<b>moberly3</b>
<b>4<sup>th</sup> Period</b>	<b>22559008</b>	<b>moberly4</b>

# Ecology

- **Scientific study of interactions between living things and their surroundings.**

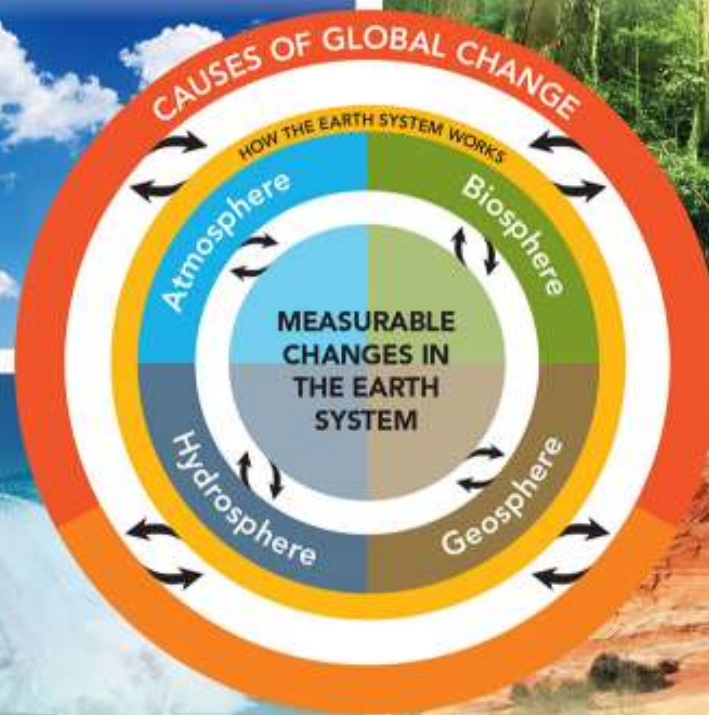
# Ecology

- **Biotic vs. abiotic factors**

# Ecology

The **atmosphere** includes all the gases that surround Earth.

The biosphere includes all living organisms and the environments they live in.



The **hydrosphere**, consists of all Earth's fresh water and salt water, including water vapor and rain in the atmosphere, and water underground.

The **geosphere** includes all the "usually solid stuff"—rocks, continents, and ocean floor. Deep inside Earth, portions of the geosphere are liquid.

# Ecology

- **Atmosphere**



# Ecology

- Hydrosphere



# Ecology

- **Geosphere**





# Ecology

- **Biosphere**

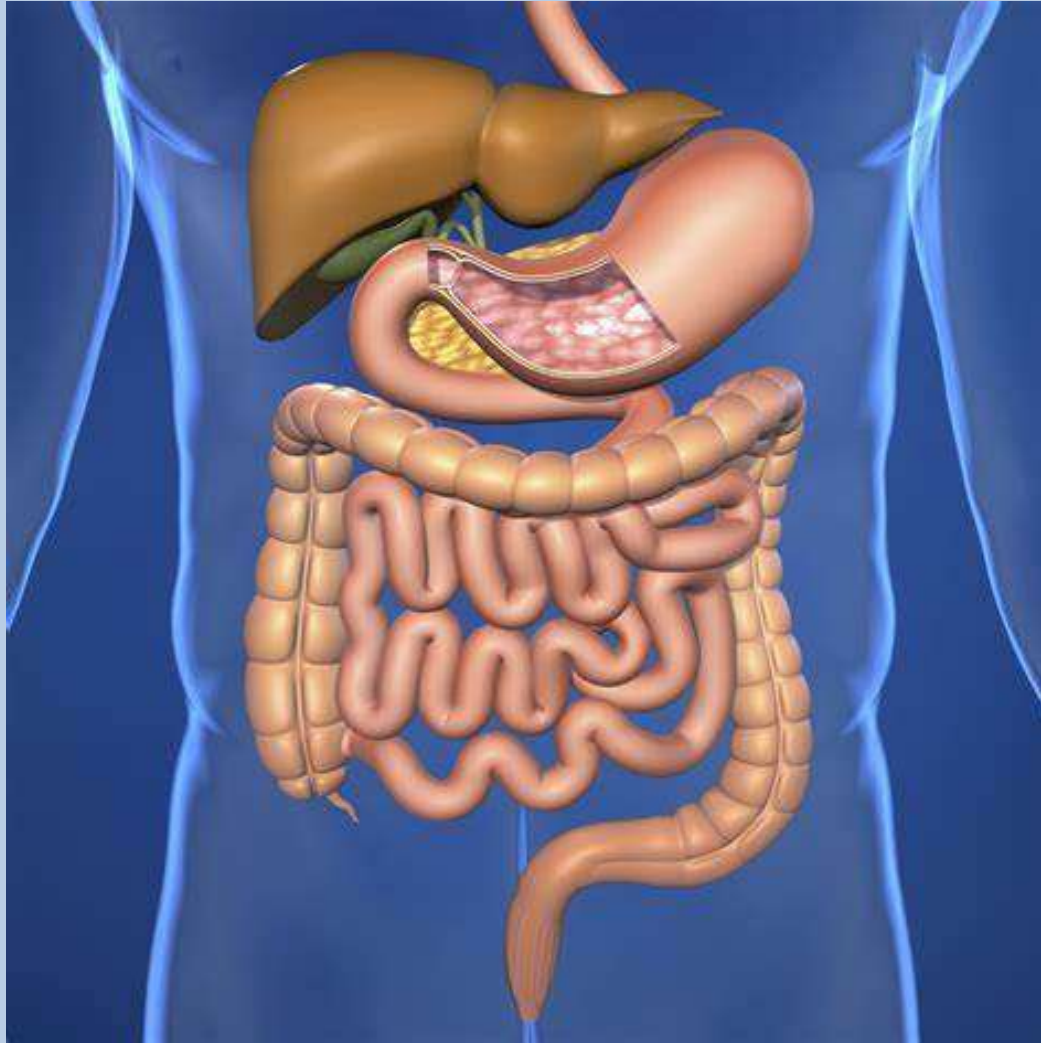


# Ecology

- **System: Set of interconnected parts that make a whole**
- **Can be open or closed**



# Ecology



# Ecology



# Ecology



# Ecology



# Ecology



wikiHow to Cook Asparagus on the Stove

# Ecology

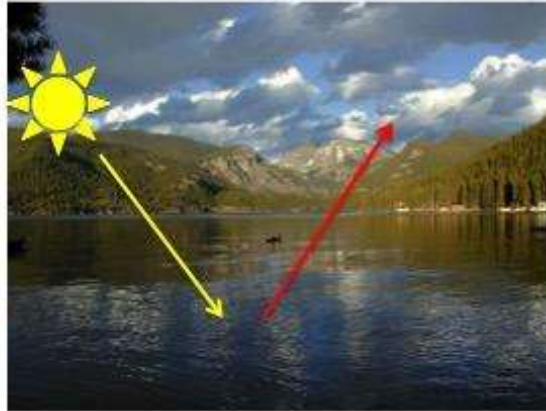
- **Is Earth an open or closed system?**



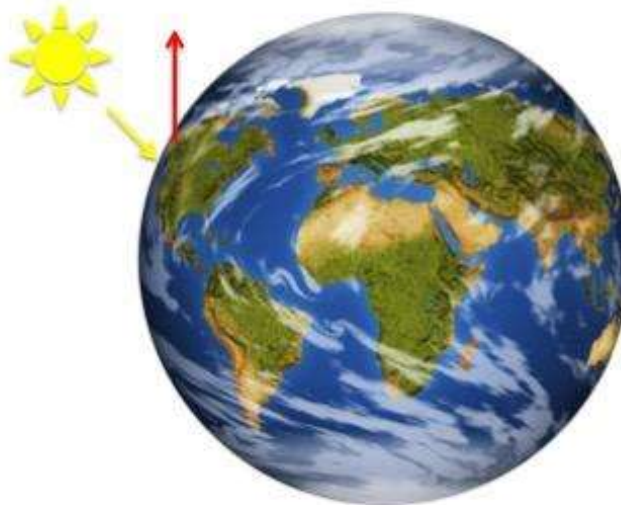


# Ecology

**Open  
System**

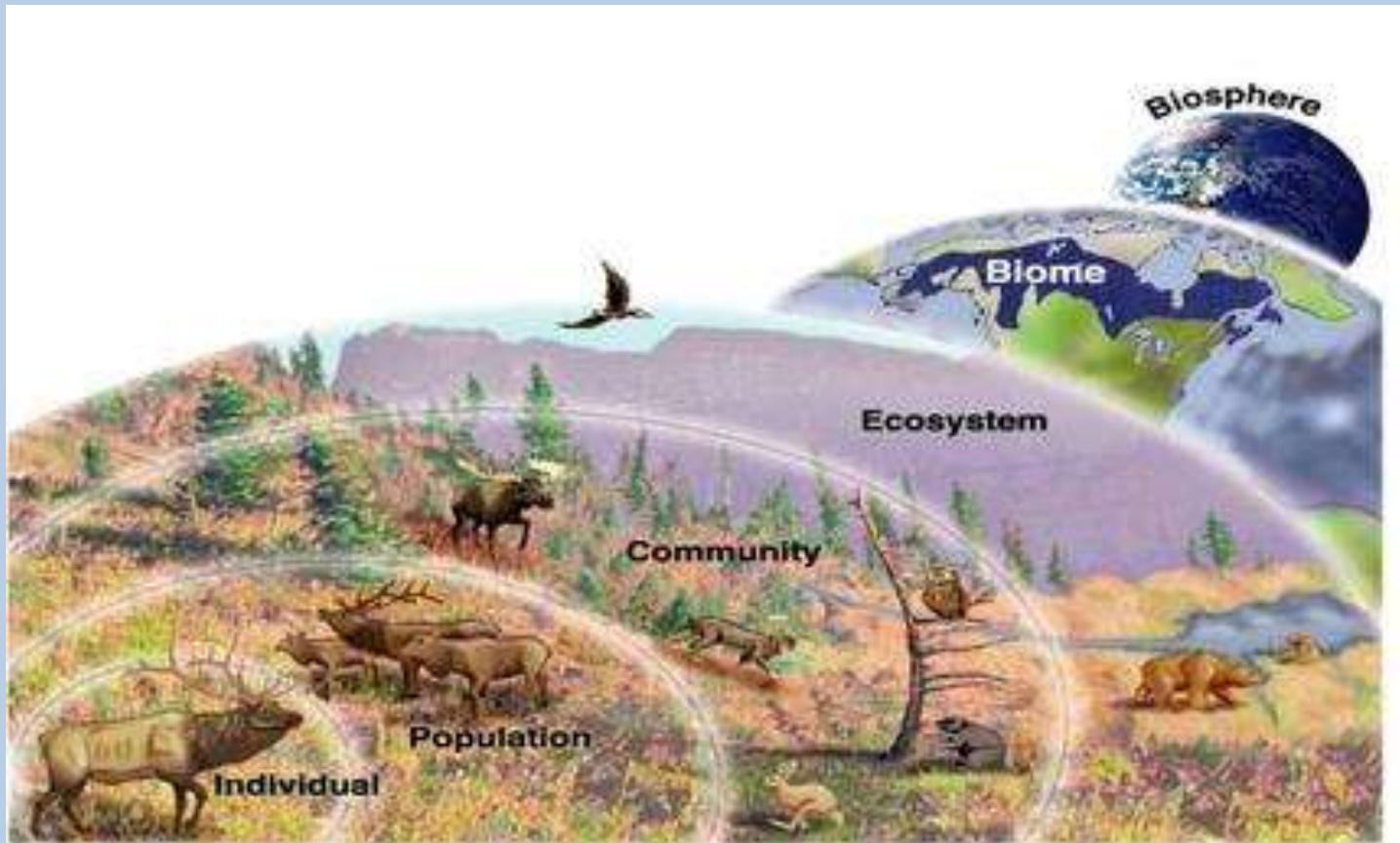


**Closed  
System**



# Ecology

- **Ecosystem: All biotic and abiotic components of a particular area.**



# Ecology

- **Complete virtual lab!**
- **Use Classlink to login to your class textbook and do chapter 3 lesson 1 skills activity: Factors Affecting Growth**



# Ecology

- **Complete virtual lab!**



**Programs**

**Classes**



**Miller & Levine  
Biology**

**No new assignments submitted**

**No new attachments**

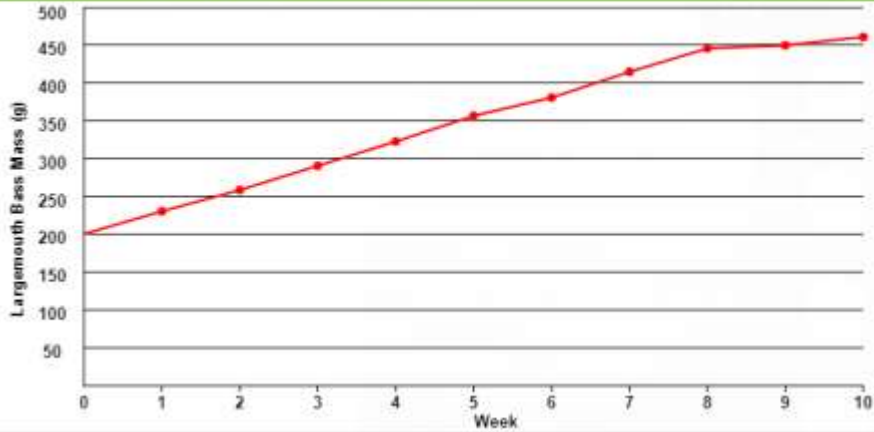
[View program ▶](#)

[View all 2 Classes ▶](#)

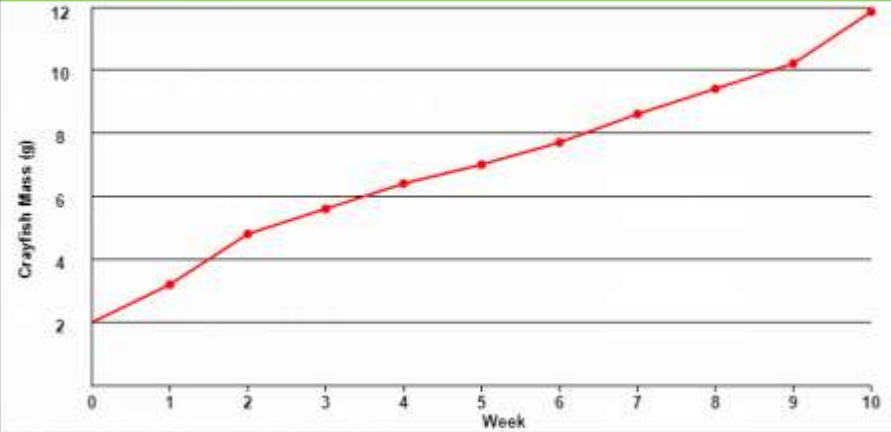
# Ecology

- Temperature

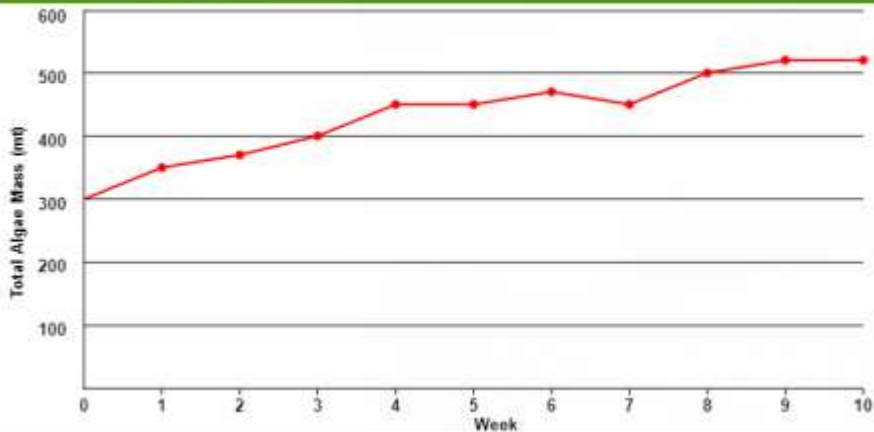
Largemouth Bass Mass (g) (30°C)



Crayfish Mass (g) (30°C)



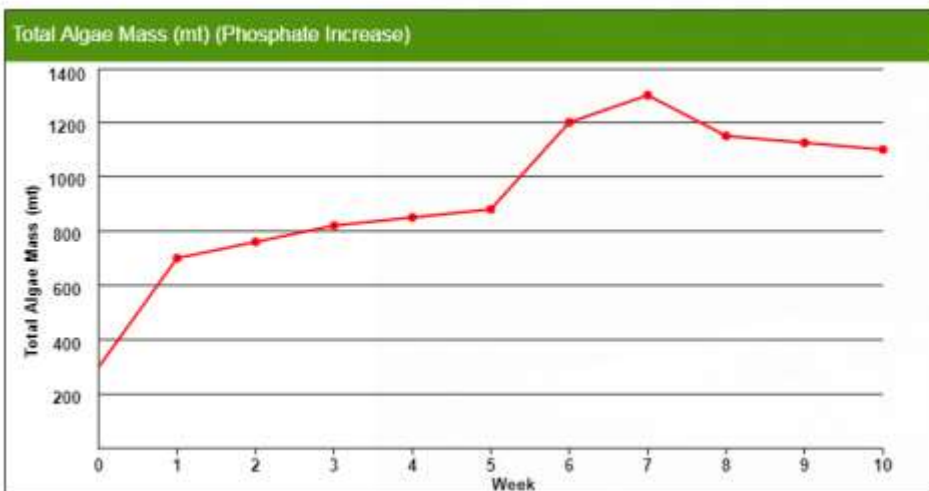
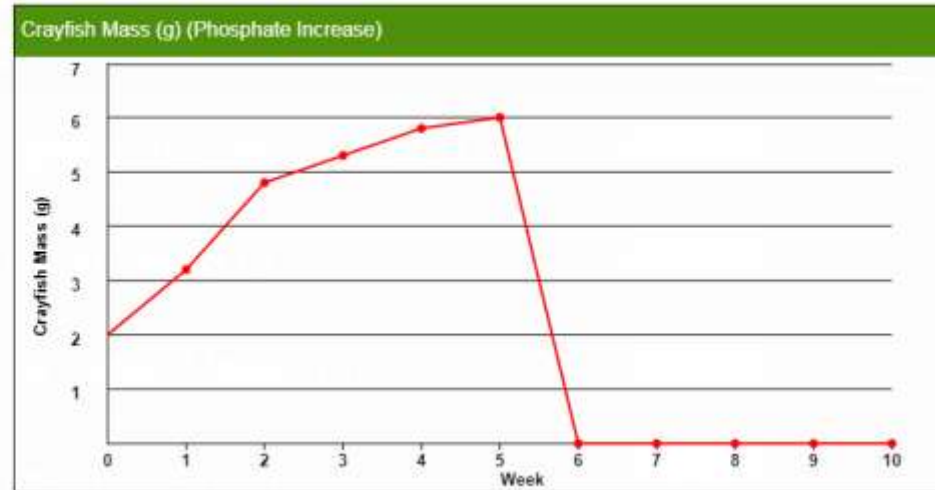
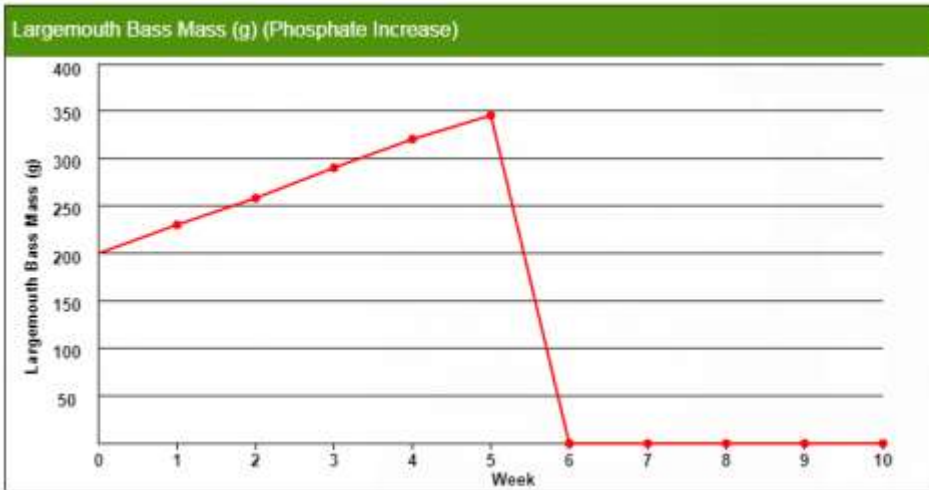
Total Algae Mass (mt) (30°C)



Add graph here

# Ecology

- Phosphorous



# Ecology

- **How are abiotic factors important for our survival?**