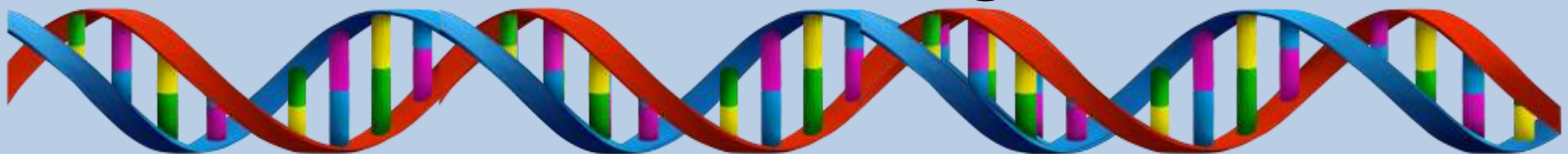
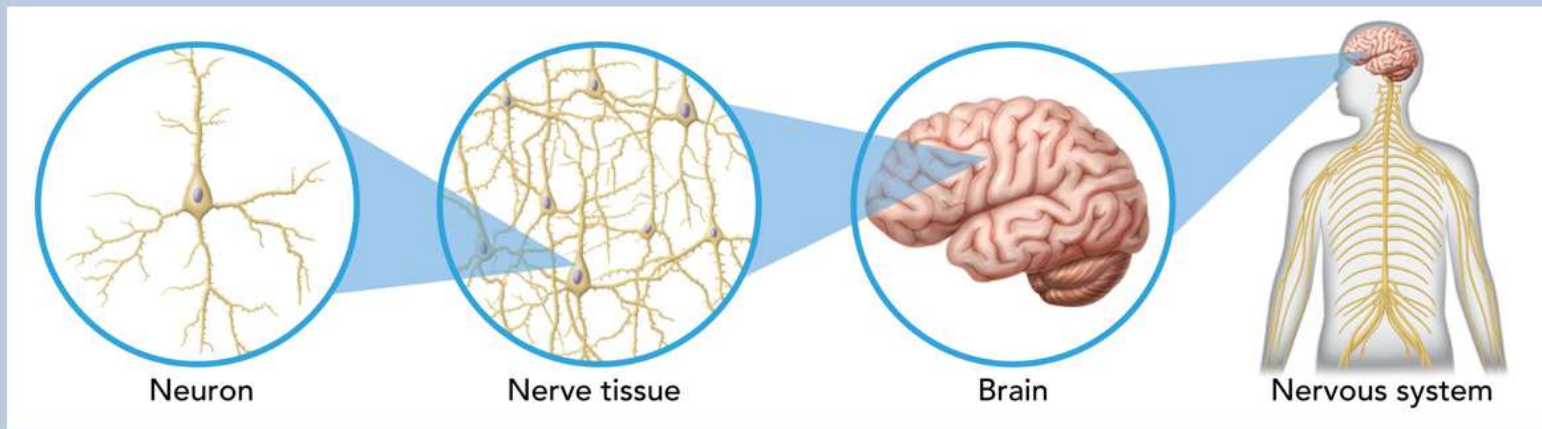


1. Is a leaf an organ in a plant?
2. Which two processes are ways that autotrophs can capture energy?
3. Why is ADP the “battery” of your body?
4. Would it be beneficial for plants to be able to absorb all wavelengths of light? WHY?
5. What color would plants be if they **ABSORBED** all colors of light?



Organs

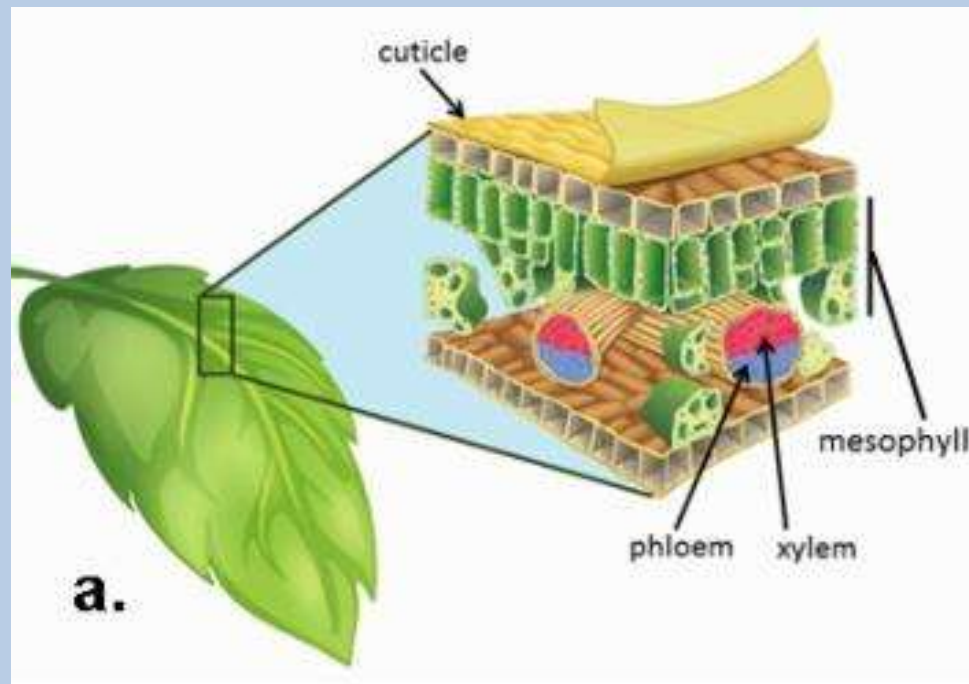
- An organ is made a different tissues that work together to perform a function



Cell → Tissue → Organ → Organ system

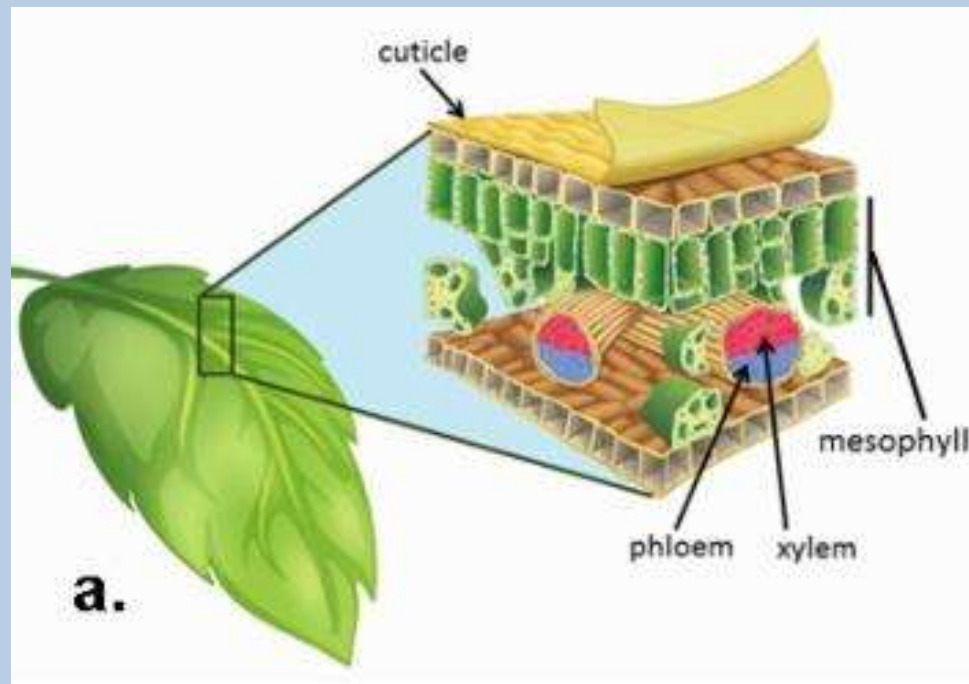
Organs

- An leaf is composed of different tissues that work together to do a function, what function do leaves do for plants?

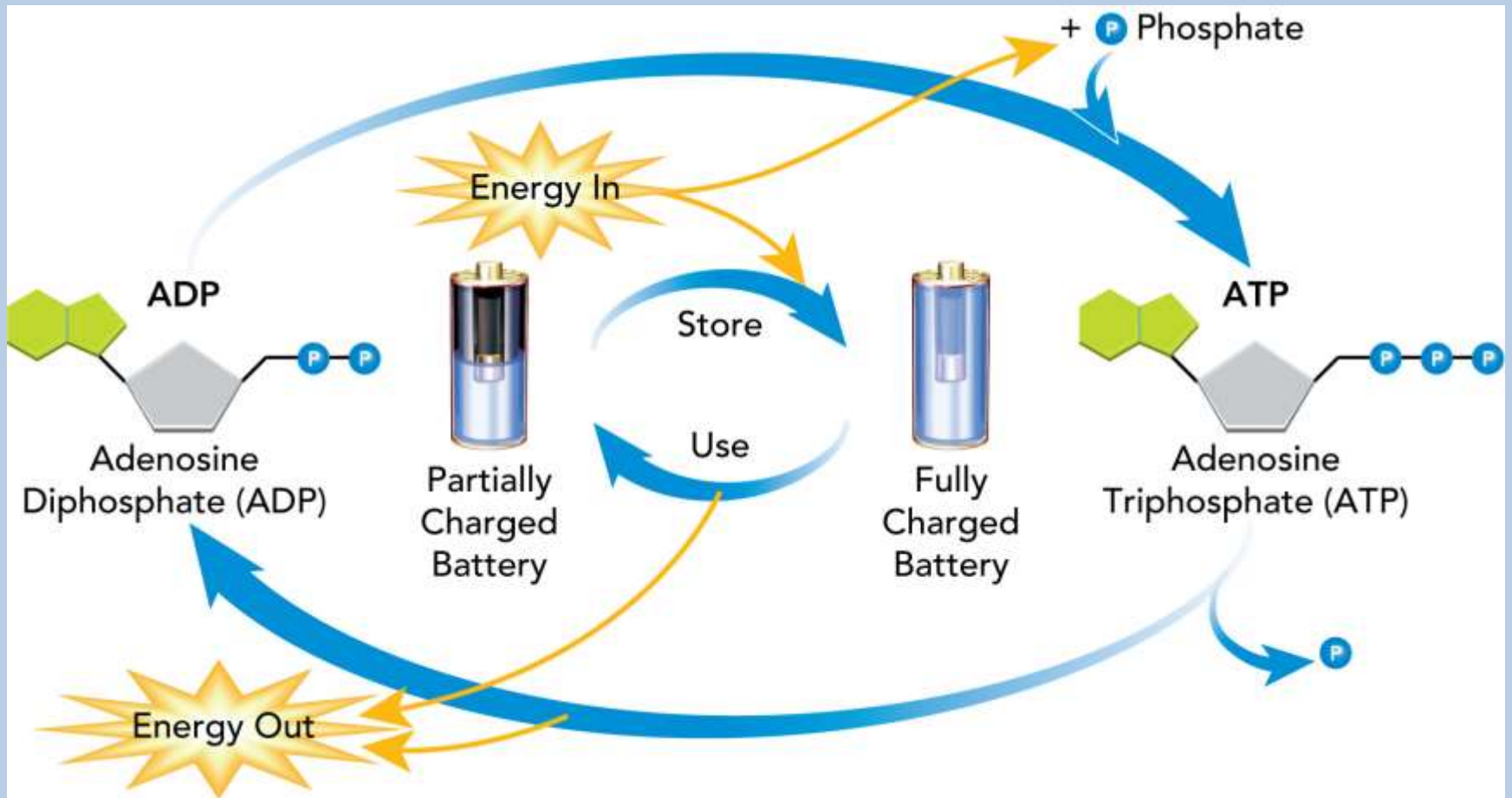


Organs

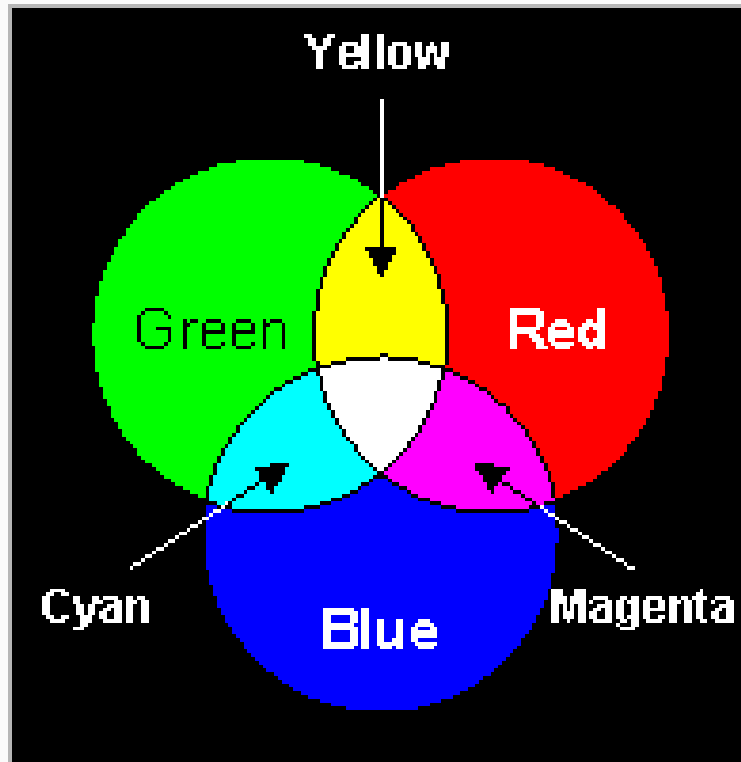
- An leaf is composed of different tissues that work together to do a function, what function do leaves do for plants? **PHOTOSYNTHESIS!**



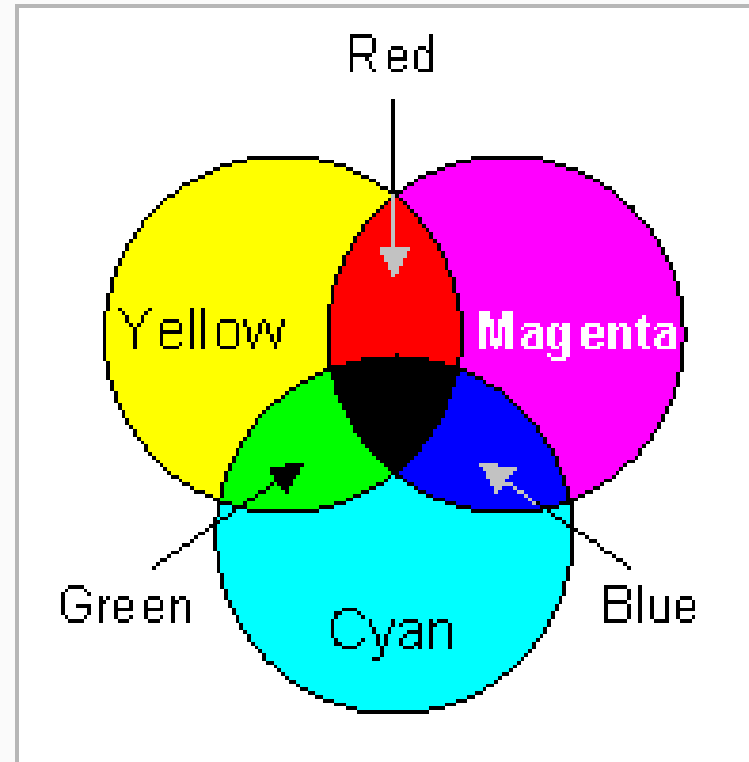
Energy



Light and Color



Additive (light)



Subtractive (paint)

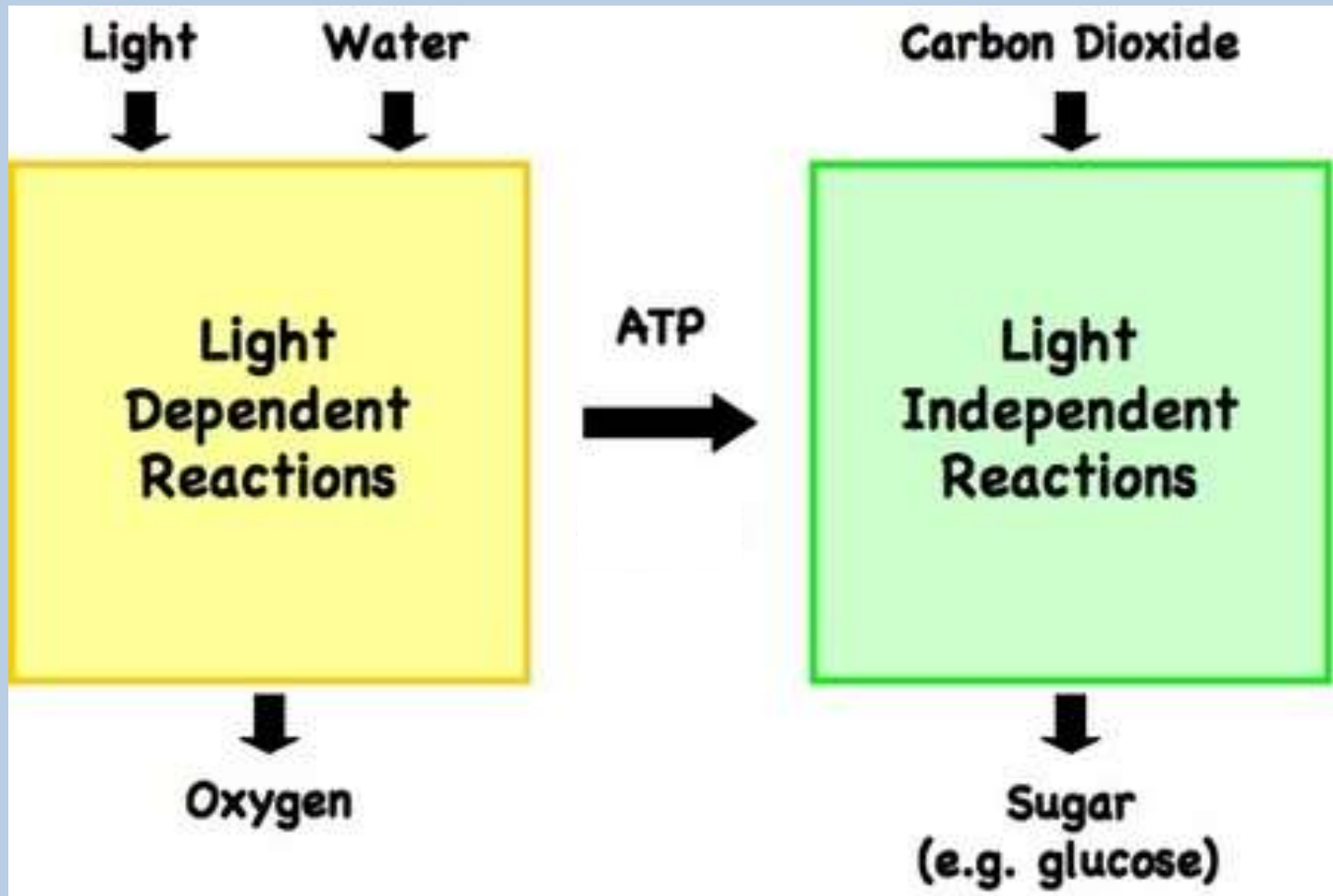
Energy

- https://www.youtube.com/watch?v=bJ_QhQbuFD8

Energy

- **Why did the gummy bear burn?**

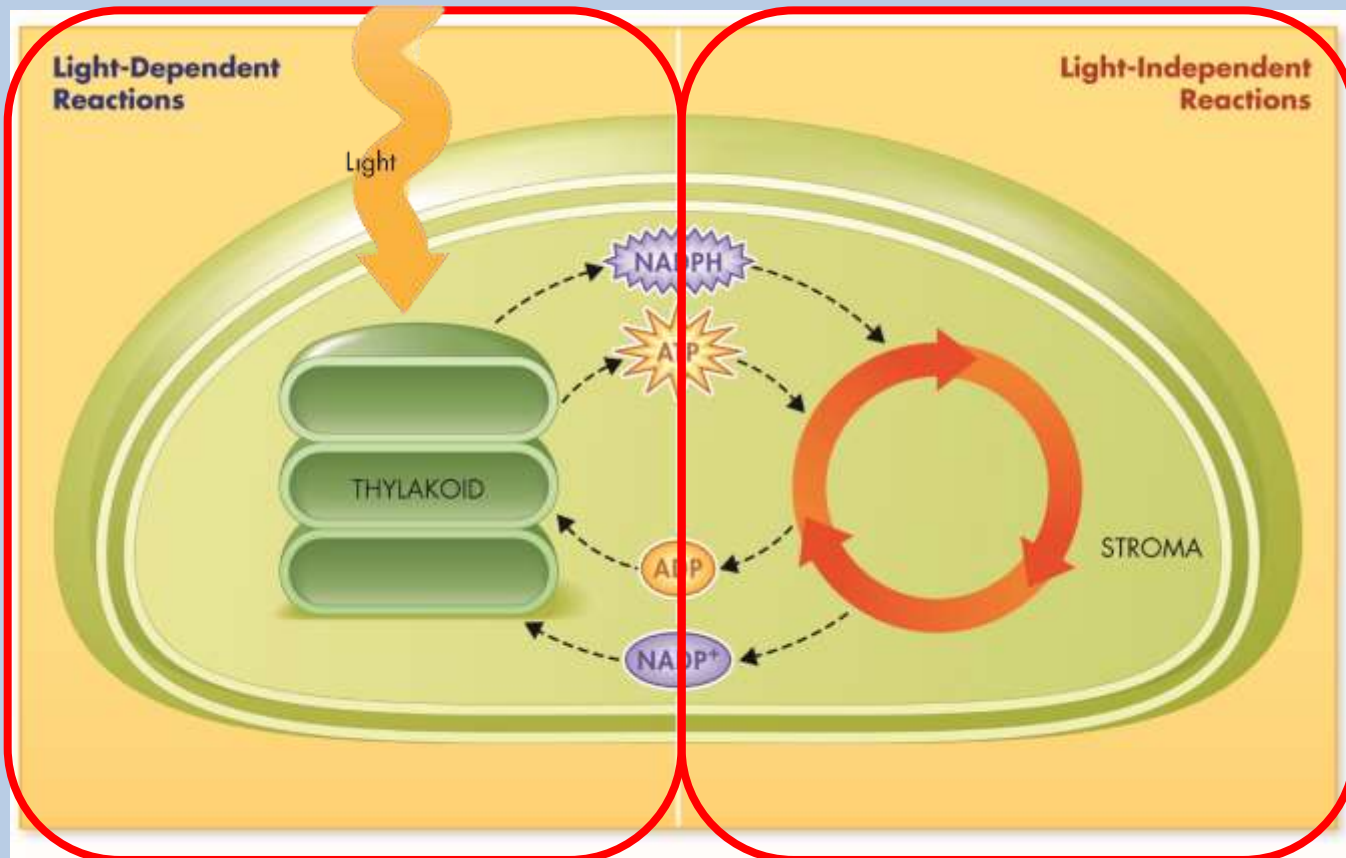
Photosynthesis



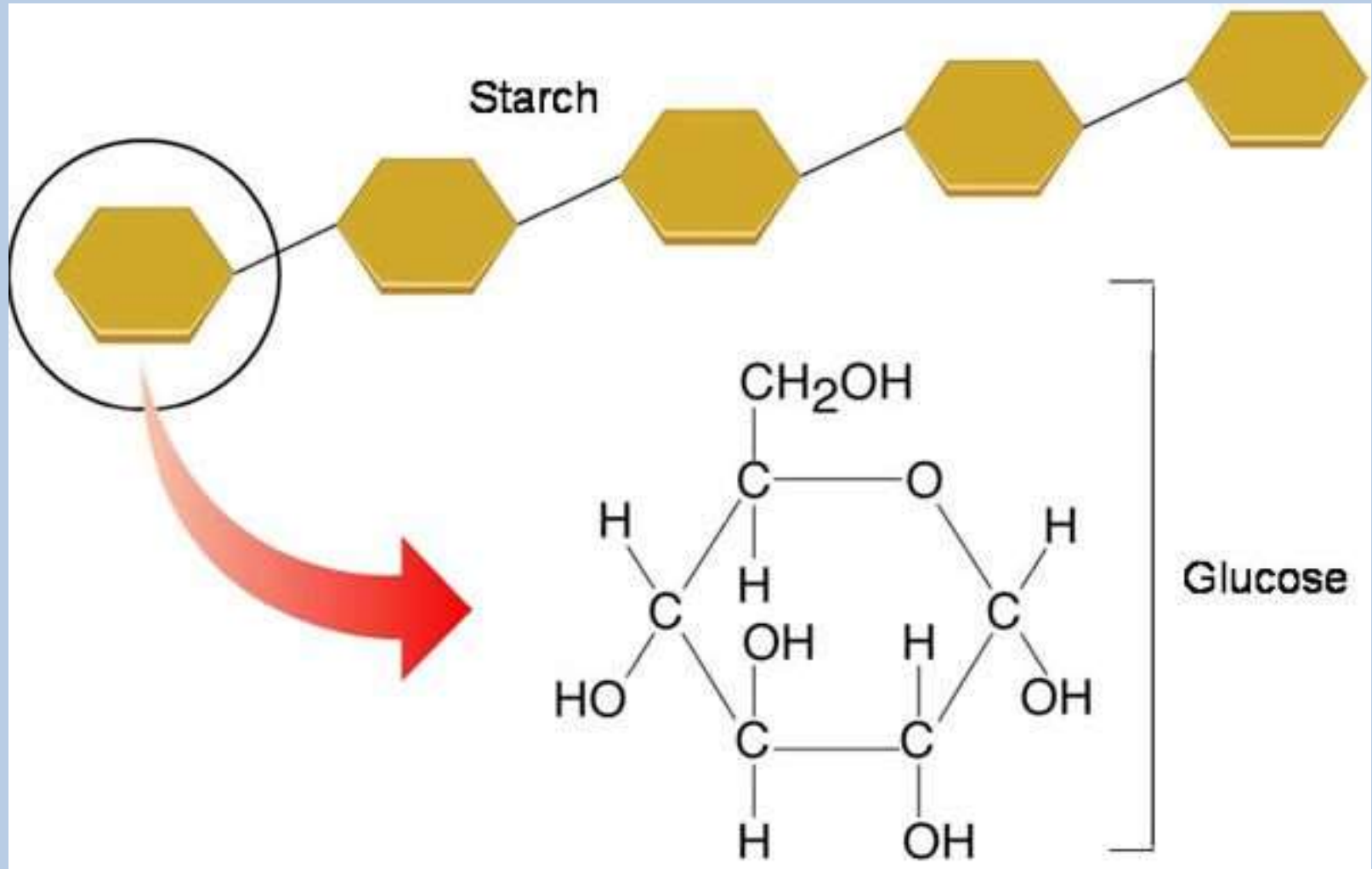
Photosynthesis and Light

Photosynthesis involves two sets of reactions:

- Light-dependent reactions
- Light-independent reactions



Photosynthesis



Photosynthesis Dance

- **We are about to do an activity in the hallway**
- **We must be QUIET and respectful to other classes**
- **Listen carefully to instructions or you will not understand what is happening**

Photosynthesis

- **Today you must finish:**
 1. **Optimal Conditions for Photosynthesis**
 - ✓ Check it off
 - ✓ Tape on page 42
 2. **Egg-mosis Conclusion to Turnitin.com**
- **Then make sure you have no missing assignments**