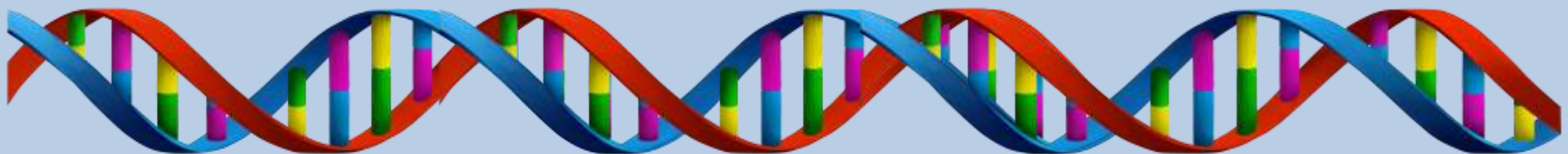
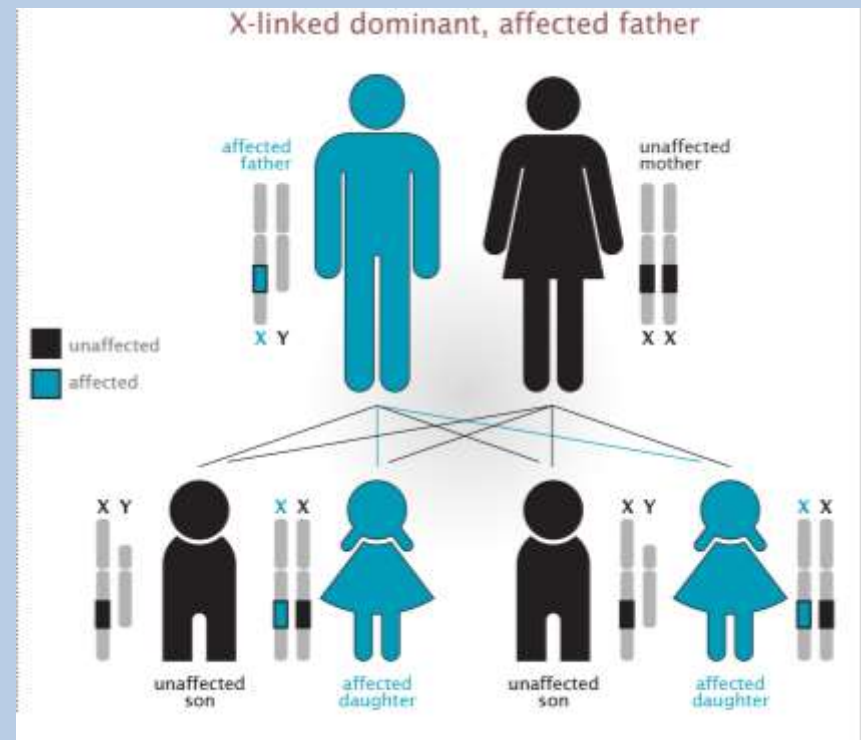
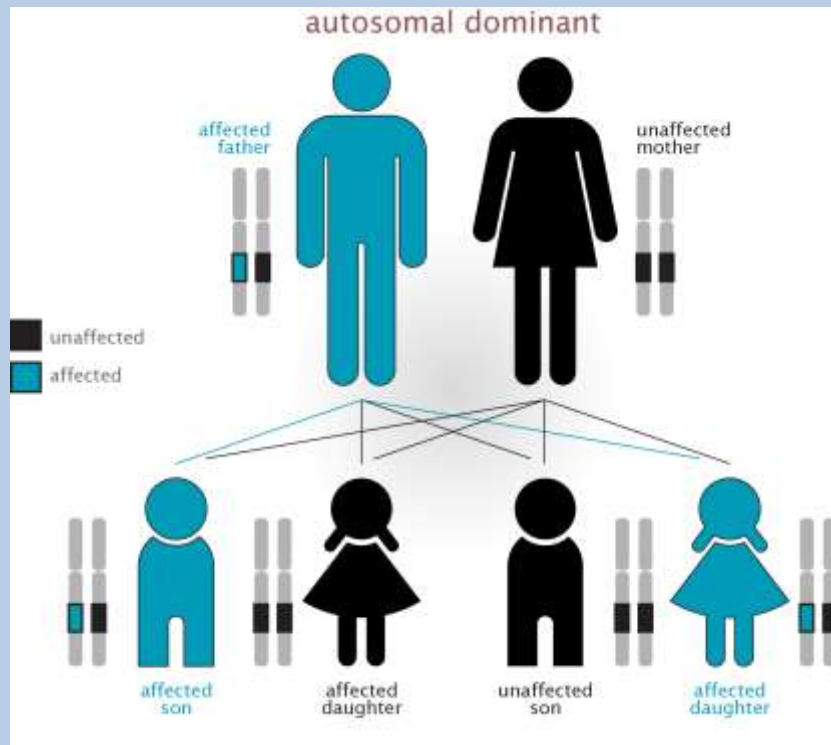


- 1. If a man is affected by an autosomal dominant disorder what is the probability that his children will be affected?**
- 2. If a man is affected by a sex-linked dominant disorder what is the probability that his children will be affected?**



# Dominant Inheritance



# The Real *Beauty and the Beast*

- Often times fairy tales are based on true events that have been made more “magical”



# The Real *Beauty and the Beast*

- *Beauty and the Beast* is no exception, the book may have been based on a curious genetic disorder





# The Real *Beauty and the Beast*

- This is Pedro Gonzalez and his wife, Catherine. Could they be the real beauty and the beast?



# The Real *Beauty and the Beast*

- We will be watching a Smithsonian Institute Documentary to learn their story, answer the questions as you watch



# Genetic Disorder Project

- In groups of 4... NOT 5... NOT 3...



# **Genetic Disorder Project**

- **Each member will be responsible for certain information**
- **Member assignments will be up to the group**



# Genetic Disorder Project

- You will have Monday and the first half of block day to put the presentations together
- Presentations must be no more than 4 minutes
- Presentations will be on BLOCK DAYS next week
- **STAY FOCUSED**

# Genetic Disorder Project

- **Today:**
  1. **Research and select a genetic disorder**
  2. **Sign up on the front desk**  
ONLY ONE GROUP PER GENETIC DISORDER
  3. **Member assignments**
  4. **Research/answer the questions in the section you are assigned to**