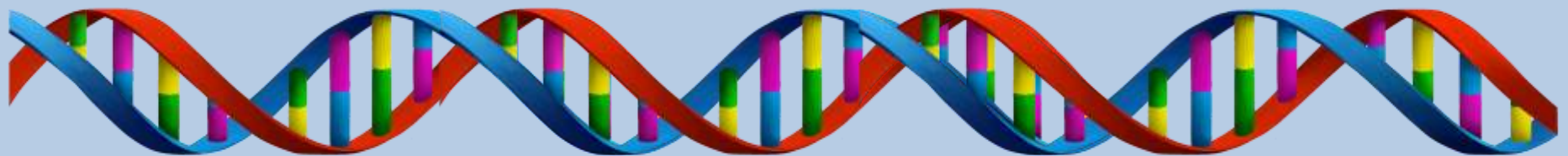
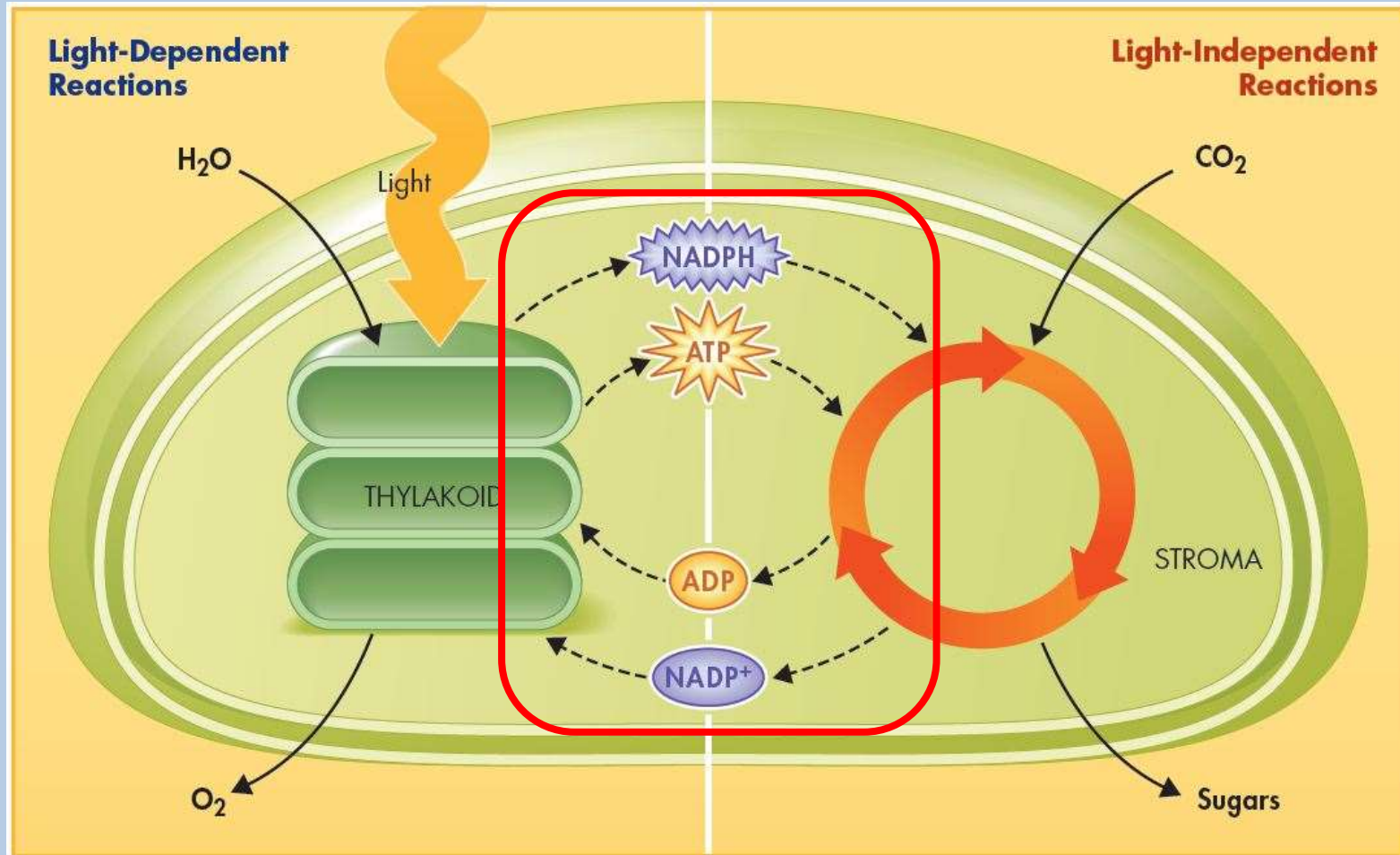


- 1. Where do the light dependent reactions happen?**
- 2. Where do the light independent reactions happen?**
- 3. What reactant is used in the light dependent reactions?**
- 4. What reactant is used in the light independent reactions?**



Interdependence of Reactions

Light-dependent and light-independent reactions have an interdependent relationship.

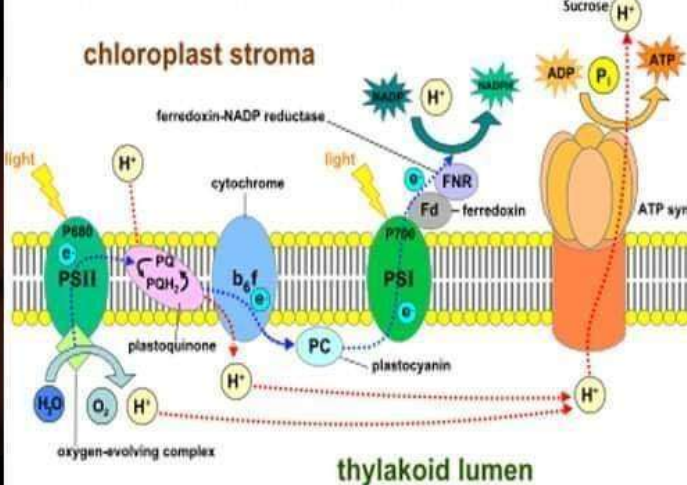
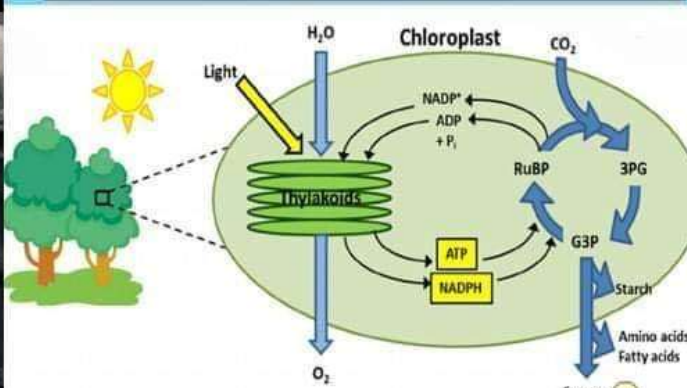
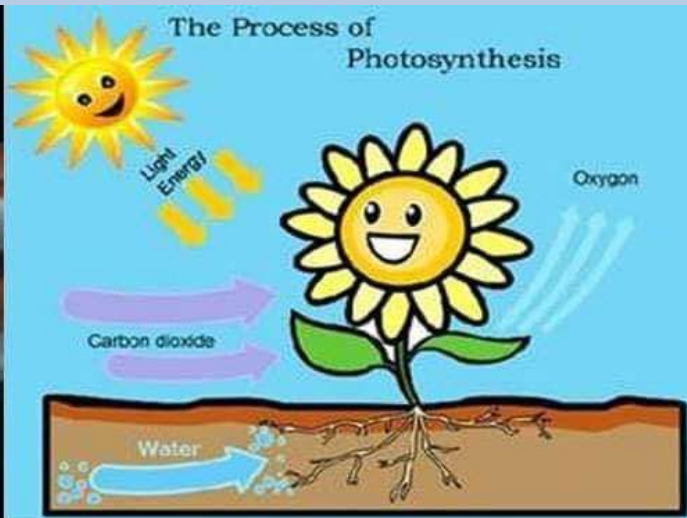


Logistics

- Finals start January 21

- **START STUDYING NOW**

SUN	MON	TUE	WED	THU	FRI	SAT
[Blacked out row]						
[Blacked out]	6	7	8	9	10	11
12	13	14	15	16 UNIT 4 TEST	17	18
19	[Blacked out]	21 7	22 5/6	23 3/4	24 1/2	25
26	[Blacked out]	28	29	30	31	

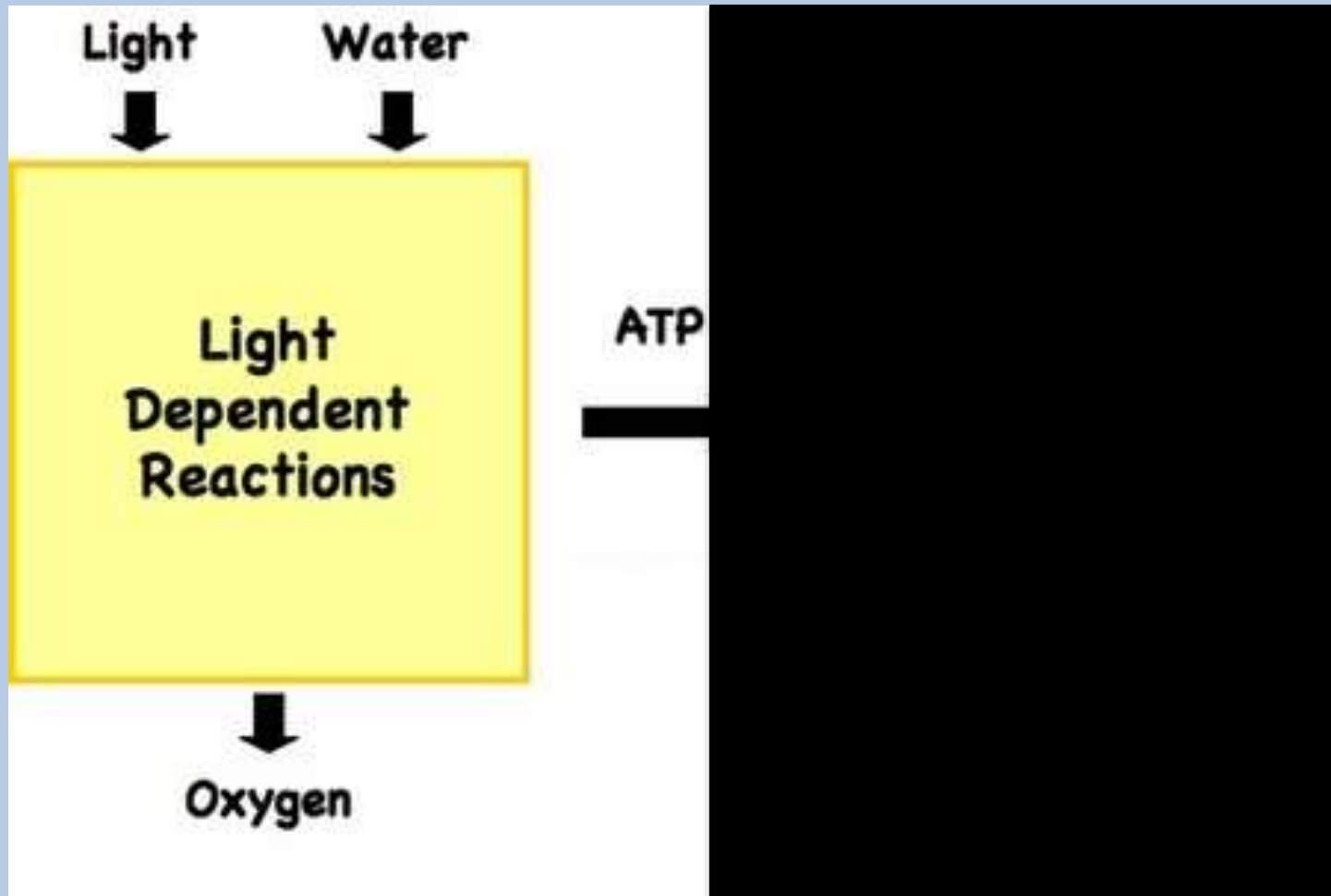


Photosynthesis

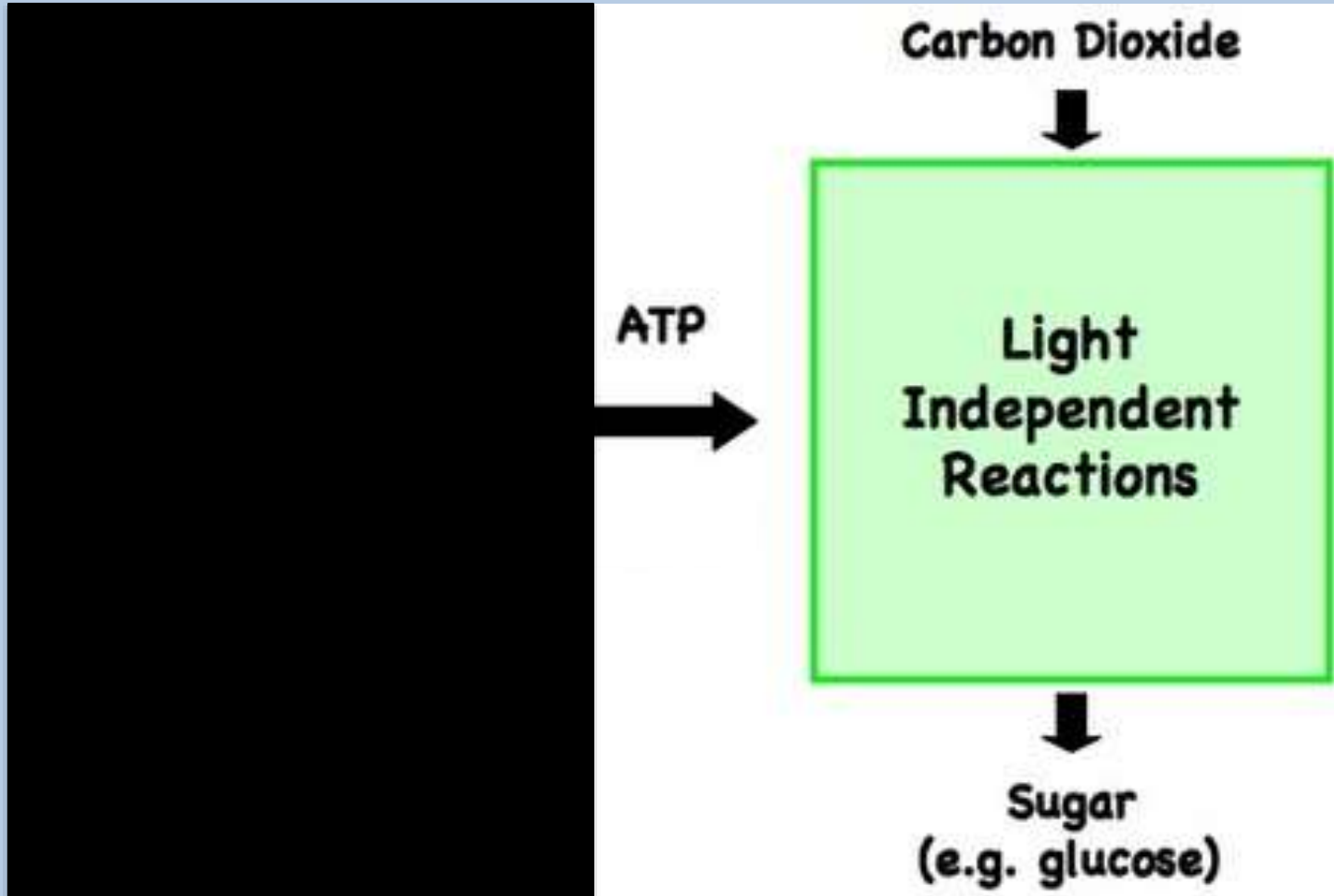
- **So why do plants appear green?**



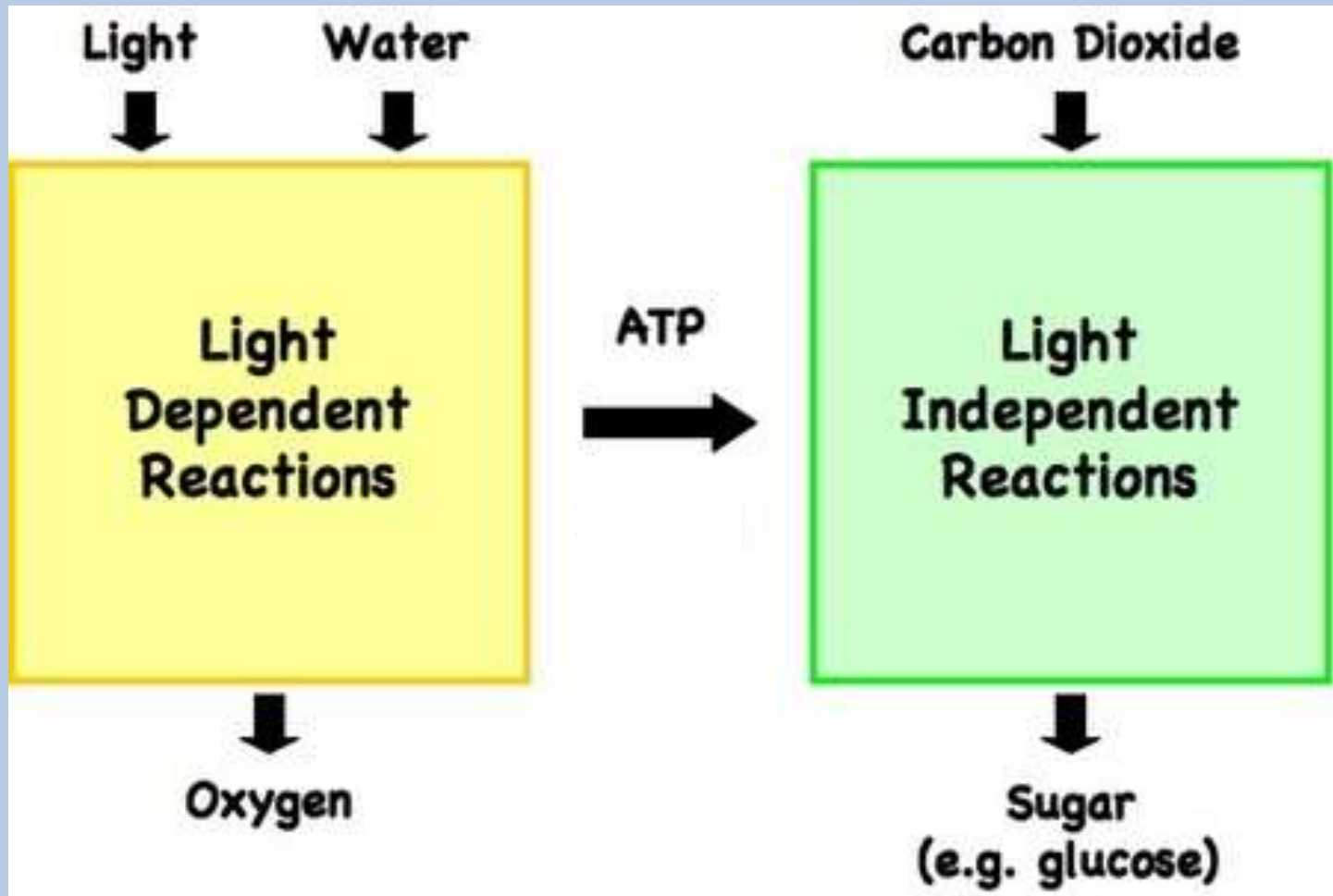
Photosynthesis



Photosynthesis



Photosynthesis



Photosynthesis

- **Let's do our photosynthesis dance for total body response practice**
- ***Remember the hall is the chloroplast***

Photosynthesis Leaf Lab

- **Tomorrow we will be doing a lab to test for a product of photosynthesis, today we have to set the lab up so that there is time for the reaction to happen**

Photosynthesis Leaf Lab

- With your lab group you will be making a “shield” out of black construction paper to block light from reaching most of a leaf

Photosynthesis Leaf Lab



- You will be cutting a small shape in the middle of the shield

Photosynthesis Leaf Lab



Photosynthesis Leaf Lab



1. **Day 1 procedures on the lab sheet**
2. **Bring the shield up to Mrs. Moberly**
3. **Go back to your seat**

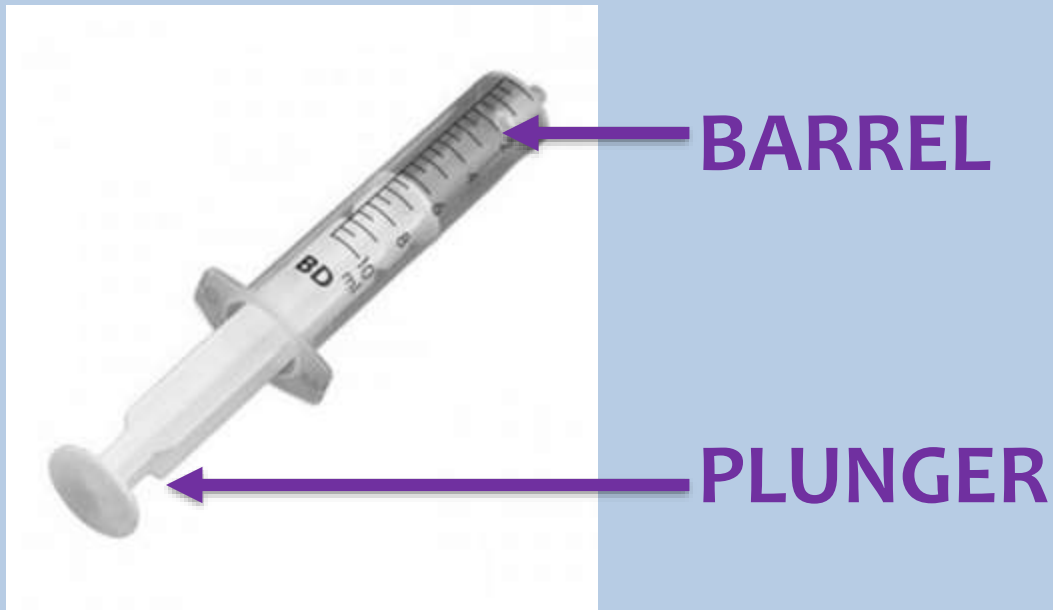
Spinach Lab

- **Tomorrow the lab will test for 1 product of photosynthesis, today you will be testing for the other product using spinach**



Spinach Lab

- For this test you will be using a syringe to create a vacuum



Spinach Lab

- To do this you must put your thumb over the end of the syringe and pull back and hold for at least 10 seconds; *this can be difficult*



Spinach Lab

- If you have done this correctly the spinach leaves will sink
- *If they float you have to try again*



Spinach Lab

- **FOLLOW THE DIRECTIONS CAREFULLY AND EXACTLY**
- *If you don't there is a high probability that your lab will not work the way it is supposed to*
- **STEP 6: 8 mL NOT 20**

Spinach Lab

- Pre-lab
- Get checked off
- Procedures **READ CAREFULLY**
- **STEP 6: 8 mL NOT 20**
- Begin analysis